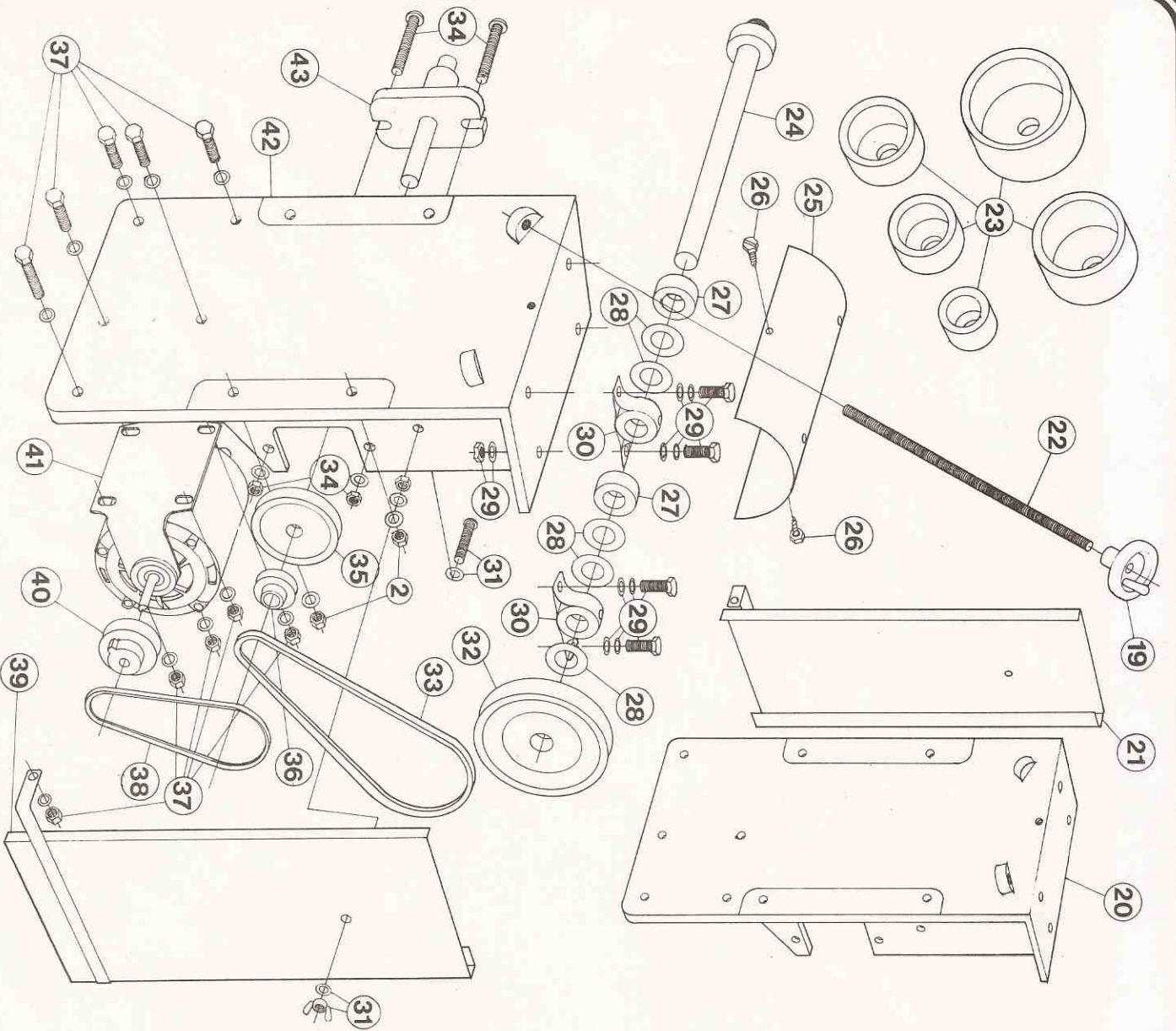


model 381
sphere maker

- 1 # 58 clamp casting - right
- 2 1/4"-20 x 1 1/2" hh casting bolt assembly
- 3 5/16"-18 x 5/8" hh adjusting bolt with lock nut
- 4 1/4"-20 x 2 1/2" rh feed block bolt assembly
- 5 feed block
- 6 8" grit pan
- 7 4" grit pan
- 8 1/4" fender washers and wing nut
- 9 grit pan holder
- 10 feed rod
- 11 3/8" collar
- 12 spring
- 13 3/8" steel washer
- 14 3/8" fiber washer
- 15 # 58 clamp casting - left
- 16 frame
- 17 thumbscrew
- 18 grit pan holder bracket
- 19 # 275 3/8" crank handle



model 3B1

sphere maker

- 20 # 57 body casting - left
- 21 belt guard - left
- 22 verticle adjustment rod
- 23 cutter cups
- 24 arbor shaft
- 25 arbor cover
- 26 # 6-⁵/₈ h h sheet metal screw
- 27 collar
- 28 fiber washer
- 29 1/4-20 x 7/8 h h bearing bolt assembly
- 30 bearing
- 31 1/4 x 3 1/2 r h bolt assembly
- 32 as64-1 arbor pulley
- 33 4L280 belt
- 34 1/4-20 x 1 c c bolt, washer, nut
- 35 5a 5/8 pulley
- 36 175a 5/8 pulley
- 37 1/4-20 x 7/8 motor bolt assembly
- 38 4L270 belt
- 39 belt guard - right
- 40 175a 1/2 pulley
- 41 5K917 motor
- 42 # 57 body casting - right
- 43 counter shaft assembly